



## 29 Thomas Thomsen Drive THABEBAN QLD

3  1  1 

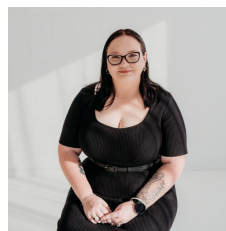
This well presented family home is located in the suburb of Thabeban.

**Available Date: NOW!**

**Features include:**

- <li>- Lounge at the entrance.</li>
- <li>- Nicely spaced open living, dining and kitchen areas.</li>
- <li>- Kitchen with electric cooking, double sink and plenty of cupboard space.</li>
- <li>- Three bedrooms, all with built-in wardrobes.</li>
- <li>- Bathroom has shower over the bath and toilet.</li>
- <li>- Internal laundry.</li>
- <li>- Single carport adjacent to the house.</li>
- <li>- Fenced backyard with garden shed and clothesline.</li>
- <li>- Ceiling fans in the lounge and main bed.</li>

**View :** <https://www.thefourwalls.com.au/lease/qld/bundaberg-wide-bay/thabeban/residential/house/7482758>



**Alana Summers**  
07 4153 6444