



## 28 Beech Links Drive ASHFIELD QLD

4  2  2 

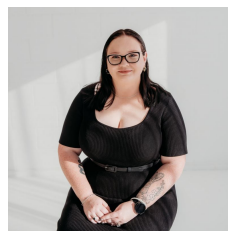
This well presented family home is located in the sought after suburb of Ashfield.

**Available Date: 08/08/23**

**View :** <https://www.thefourwalls.com.au/lease/qld/bundaberg-wide-bay/ashfield/residential/house/7664579>

**Features include:**

- Separate lounge room off the entrance.
- Nicely spaced open living and kitchen area.
- Kitchen with electric cooking, dishwasher and breakfast bar.
- Four bedrooms, all with built-in wardrobes.
- Main bedroom with walk-in wardrobe and ensuite.
- Main bathroom has bath, shower and separate toilet.
- Internal laundry.
- Double lock-up garage with internal access.
- Fenced backyard with covered area and clothesline.



**Alana Summers**  
07 4153 6444